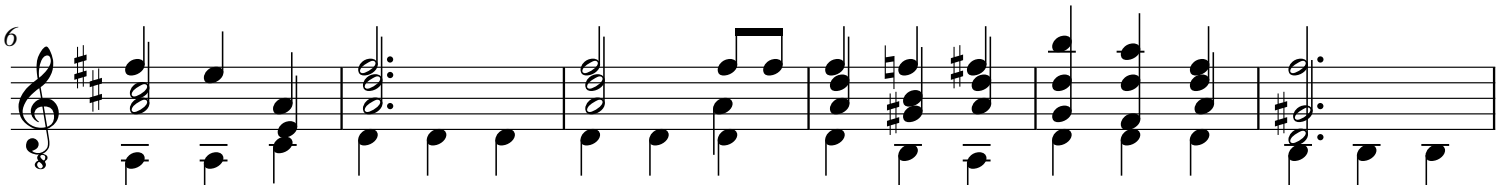


Turn Your Eyes upon Jesus (Classical Guitar)

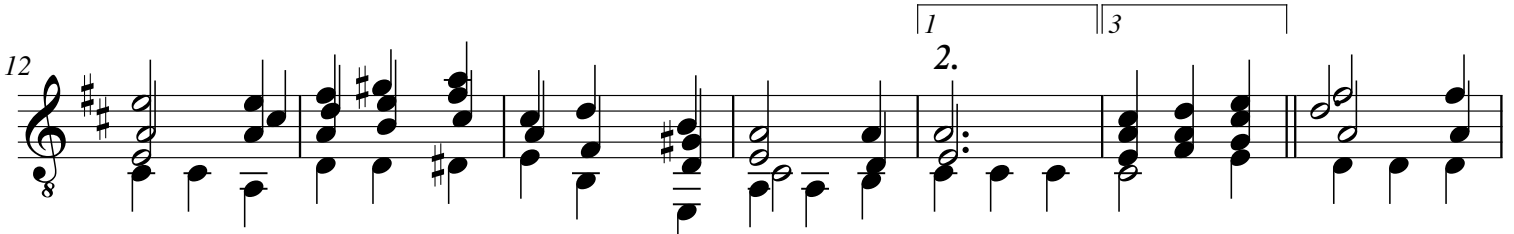
Verse



O soul are you wea-ry and troub - led? No light in the
Thro' death in - to life ev - er - last - ing He passed, and we
His word shall not fail you He prom - ised; be - lieve Him and



dark-ness you see? There's light for a look at the the Sav -
fol - low Him there; O-ver us sin no more hath do - min -
all will be well: Then go to a world that is dy -



-ior and life more a - bun-dant and free! Turn your
-ion for more than - con-qu'rorswe are!
-ing, His per-fect sal - va - tion to tell!

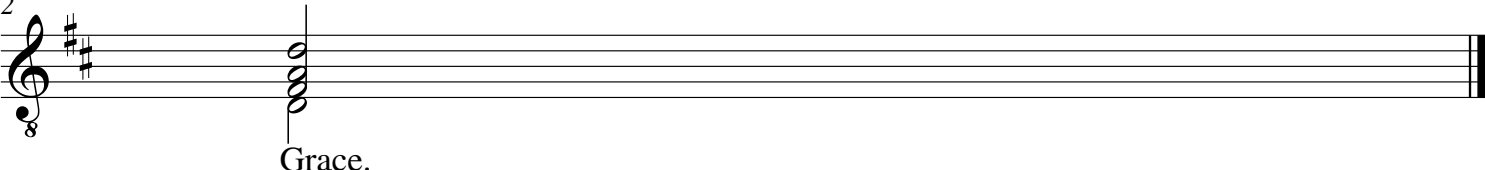


eyes up-on Je - sus, Look full in his won-der-ful - face; - - And the



things of earth will grow strange - ly dim, in the light of His Glo-ry and

32



Grace.

The image shows a musical staff with a treble clef and a key signature of two sharps (F# and C#). The staff is marked with the number 32. A grace note is written on the staff, consisting of a vertical line with a wavy, spiral-like shape at the top. The word "Grace." is written below the staff, indicating the nature of the note. The staff continues to the right with a double bar line at the end.